

TV4U

COMBO

-T2

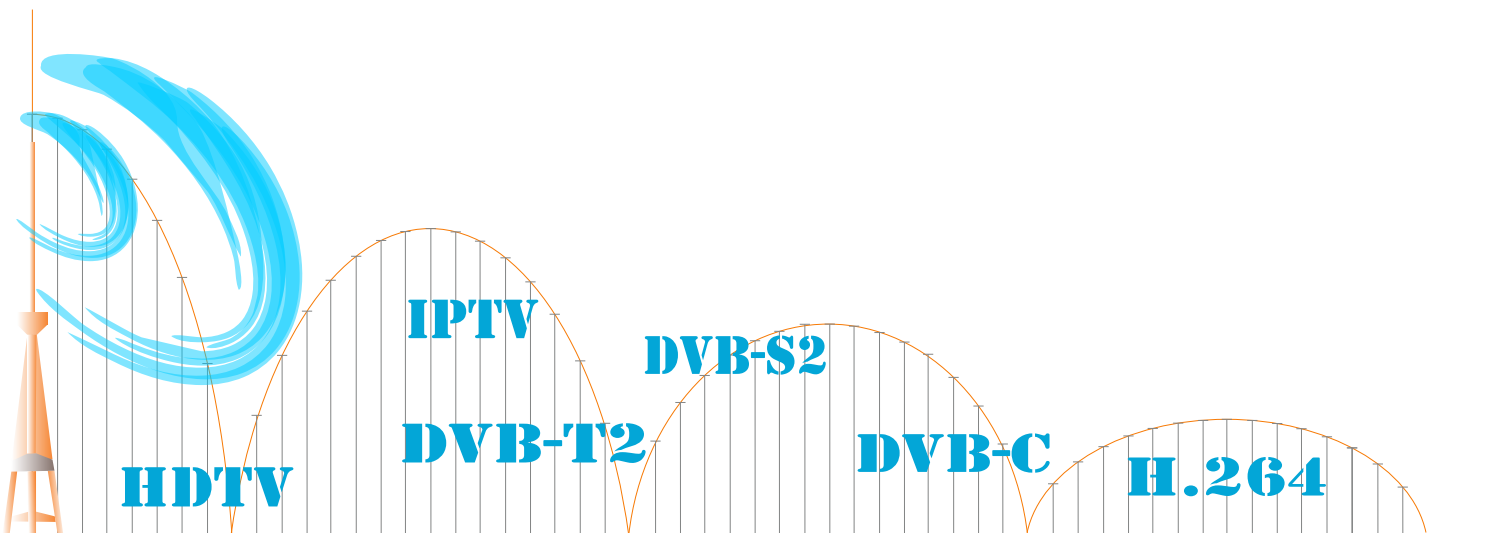
-S2

-C

-IPTV

SET-TOP-BOX

USER MANUAL



SAFETY INFORMATION

WARNING: Do not use this STB where contact with or immersion in water is a possibility. Do not use near flower vase, washbowls, kitchen sinks, laundry tubs, swimming pools, etc.

WARNING: Do not put the candle or lamp stand on the cabinet; otherwise, there is the danger of fire.

WARNING: The unit should be connected to a power supply only of the type described in the operating instructions or as marked on the unit. If you are not sure of the type of power supply (for example, 120 or 230 V) to your home, consult your local dealer or local power company.

WARNING: This product installs diodes. Do not open the cabinet or touch any parts in the inner mechanism. Consult your local dealer for technical service if the opening is required.

Note: To ensure proper use of this product, please read this User manual carefully and retain for further reference.

Note: This product installs diodes. Do not open the cabinet to avoid the unit direct exposure to radiation.

Unit Cleaning: After the unit power is turned off, you're a clean the cabinet, panel and remote control With a soft cloth lightly moistened with a mild detergent solution.

Attachments: Never add any attachments and/or equipment without the manufacturer's consent; as such additions may result in the risk of fire, electric shock, or other personal injury.

Locating: Slots and openings in the cabinet are provided for ventilation to protect it from overheating. Do not block these openings or allow them to be blocked by placing the STB on a bed, sofa, or other similar surface, nor should it be placed over a radiator or heat register.

Power-Cord Protection: Place the power-supply cord out of the way, where it will not be walked on. Please take special attentions to cords at plugs, convenience receptacles, and the point where they exit from the unit.

Object and Liquid Entry: Never put objects of any kind into this STB through openings, as they may touch dangerous voltage points or short-out parts that could result in a fire or electric shock.

Note: Moisture may be formed on the lens in the following conditions:

* when the unit is suddenly moved from a cold environment or an air-condition room to a warm place.

* immediately after a heater has been turned on.

* in a steamy or very humid room.

If the moisture forms inside the unit, it may not operate properly. To correct this problem; turn on the power and wait about two hours for the moisture to evaporate.

Parts Replacement: When the unit parts need to be replaced, user should make sure the service technician use the replacement parts specified by the manufacturer or having the same characteristics as the original part. Unauthorized replacement may put the unit in the risk of fire, electric shock or other hazards.

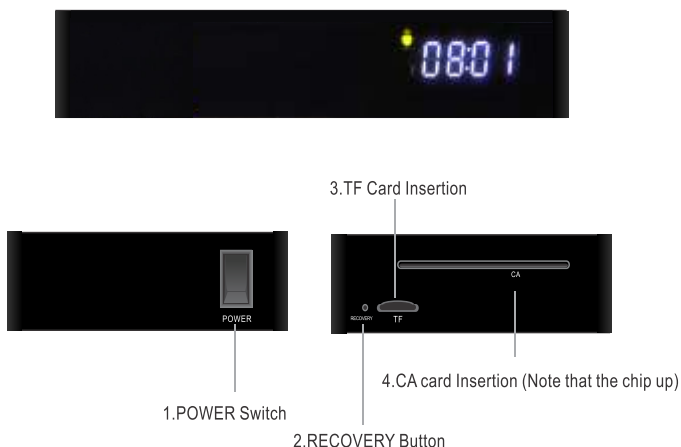
Safety Check: After all the maintenance and repairs are done, use is required to request the service technician to conduct the overall safety check to ensure the machine is in the proper condition,

SPECIFICATIONS

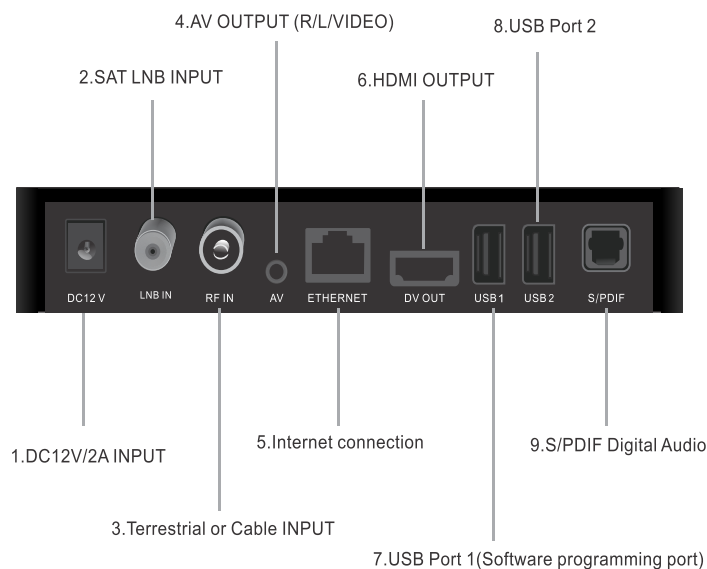
SYSTEM RESOURCES	
Operating system	Android 4.4 operating system with ARM Cortex A5
ROM/Storage	8GB Nand Flash
RAM/DDR	1GB DDR3
TUNER/Front-end	
Tuner Type	DVB-S/S2, DVB-T/T2, Cable
Input Frequency	Range 950MHz~2150MHz, 174MHz~230MHz(VHF), 470MHz~868MHz(UHF)
Input Connector	F-type, Xconnector, Female
Signal Level	-65 to -25dbm
LNB Power&	Vertical: +13.6V Horizontal:+18.5V
Polarization	Current: Man.450mA (Overload Protection)
22KHzTone	Frequency: 22 +/- 1kHz
DisEqc Control	Amplitude: 0.6 +/- 0.2V
	Version 1.0,1.1,1.2, USALS Available, unicable
Demodulation	
DVB-S/S2 mode	QPSK/8PSK.16QAM/64QAM/128QAM/256QAM
Input Symbol Rate	1-45 Mbps, Convolution Code Rate
Forward error	DVB-S 1/2, 2/3, 3/4, 5/6, 7/8
Correction(FEC)	DVB-S2 1/2, 3/5, 2/3, 3/4, 5/6, 8/9, 9/10
DVB-T/T2 mode	OFDM, 2K, 4K, 8K, 16K, 32K
Guard Interval	1/128, 1/32, 1/16, 19/256, 1/8, 19/128, 1/4
FEC	1/2, 3/5, 2/3, 3/4, 4/5, 5/6
Pilot signals	PP1-PP8
DVB-C mode	16QAM, 32QAM, 64QAM, 128QAM, 256QAM
Output symbol rate	1,725...6,9 Msymb/s
Alpha-factor	15%
FEC	Reed-Solomon, 204, 188,8
POWER SUPPLY	
Voltage	DC 12V/2A
Power Consumption	12W
MPEG TS A/V Decoding	
Transport Stream	MPEG-2, MPEG-4(H264/H.265 HEVC decode)
Input Rate	Max.120Mbit/s
Aspect Ratio	Auto,4:3,16:9,Letter Box
Video Decoding	MPEG-2,MP@ML, MPEG-4 part 10/H264
Video Desolution	720*480P/I, 720/576P/1, 1280*720P, 1920*1080i, 1920*1080P
Audio decoding	MPEG-1 layer I/II, MPEG-2 layer II, Doiby digital
Audio Mode	Left/Right/Stereo/Mono
Sampling Rate	32,44.1 and 78KHz
A/V & DATA INPUT/OUTPUT	
AV OUT(3.5mm Jack)	Video CVBS output, Audio L/R output
S/PDIF	Digital audio output
IR	38KHz
LAN Internet	WiFi:802.11b/g/n2.4G 10/100M Ethernet RJ-45
LAN cable access	
Bluetooth	BT4.0
USB	Two USB 2.0 slot Compatible
Card	TF card
MDMI	HDMI1.41920x1080@60fps 720P@60fps
PHYSICAL SPECIFICATION	
Size (W*H*D)	160*105*27mm
Net Weight	0.25kg
Operation Temperature	0 ~+45C
Storage Temperature	-10C ~+70C

1.Introduction

1.1 Front Panel



1.2 Rear Panel



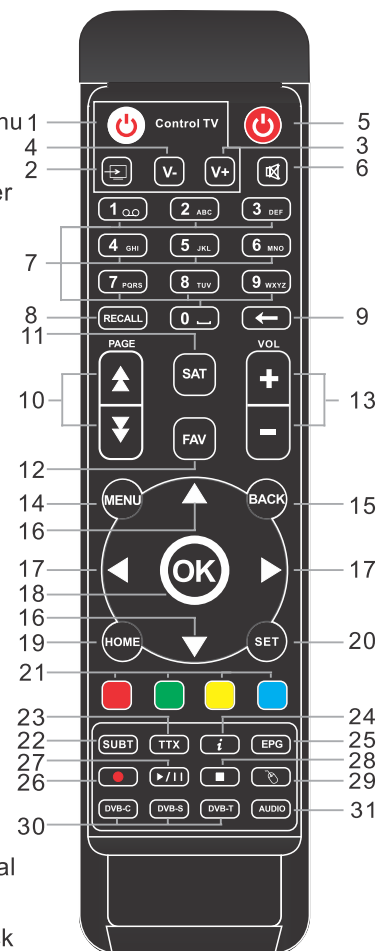
1.3 Remote Control

Learning remote controller CONTROL TV AREA:
Press to learn from the TV IR remote to control TV:

- 1. **POWER**: Learning start key and power key
- 2. **TV IN**: Key learning TV input mode
- 3. **V+**: Key learning VOL+
- 4. **V-**: key learning Vol-

- 5. **STANDBY**: Switch the STB on and standby
- 6. **MUTE**: Turn off/on the volume
- 7. **Numeric Entry**: Enter numeric values and select the channel directly by entering it's number
- 8. **RECALL**: Recalled to the previous program
- 9. **←**: Back the delete key
- 10. **PAGE UP/DOWN** : Select the page to previous or next
- 11. **SAT**: Show search the list of satellites
- 12. **FAV**: Show a list of favorite programs
- 13. **VOL+/-**: Adjust the system volume
- 14. **MENU**: Open the menu screen
- 15. **BACK**: Back to previous menu or exit the current operation
- 16. **▲/▼**: Cursor: navigation buttons used to navigate menu's items
- CH+/-: Channel UP and DOWN

- 17. **◀/▶**: Cursor: navigation buttons used to navigate menu's items
- VOL+/-: Adjusting the volume at full screen
- 18. **OK button**: Confirm a selection within a menu
- 19. **HOME**: Press "HOME" Back to home
- 20. **SET**: In any menu, press the "SET" to enter the system setup menu
- 21. **RED/GREEN/YELLOW/BLUE Buttons**: You can customize any APP software to open shortcuts, such as the red button to quickly enter KODI
- 22. **SUBT**: on/off subtitle
- 23. **TTX**: Open interactive service
- 24. **INFO**: Press for current channel information/Operation guide
- 25. **EPG**: Open up Electronic program Guide Menu
- 26. **REC**: Record the TV program
- 27. **▶/||** : Multimedia PLAY/PUSE (In the program full-screen playback, you can open the Time Shift function, but in the case of external storage to disk.)
- 28. **■**: Stop button
- 29. **☞**: Mouse Keys
- 30. **DVB-C/DVB-S/DVB-T**: Quick access signal (Effective at Home menu)
- 31. **AUDIO**: Select audio mode and audio track

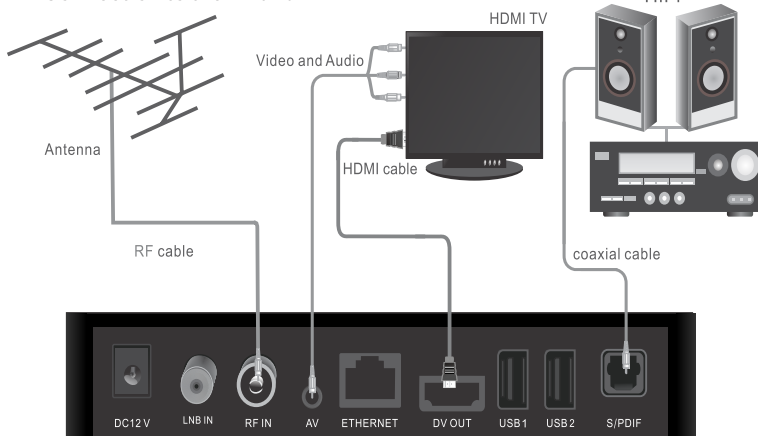


2. System connection

2.1 General

There are many different types of TV and other equipment that you can connect to the STB. In this manual you will see some of the most common ways to connect your equipment.

2.2 Connection to the TV and HiFi



3. Getting Started

3.1 Installation guide

Power on the STB BOX and open the power switch, Red light indicates the box is powered. It takes about 30 seconds to enter the main menu, and digital tube display. If you use the STB for the first time, the "Installation Guide" menu appears. Press cursor button to setup the OSD Language, TV Screen and Network connection.

3.2 HOME

Press **RIGHT** or **LEFT** button to move the cursor, and press **OK** button to access menu items.

3.3 Channel UP/DOWN

In full screen, press **UP/DOWN** key to change channel.

3.4 RIGHT/ LEFT

In full screen, press **RIGHT/LEFT** key to adjust Volume (You can not control the volume of the other state).

3.5 VOL +/-

In any menu, press **VOL +/-** key to adjust Volume.

3.6 Mute

Press **MUTE** key to mute the sound and the screen will show mute OSD icon.

Press **MUTE** key again to restore sound.

3.7 Pause/Play

In the channel full-screen playback, press the **PAUSE** key to pause playback program into timeshifting state (Timeshifting functionality requires an external disk). Press the **EXIT** button to exit pause.

There are 6 menu items:

- Satellite ◆ Apps
- Terrestrial ◆ Local
- Cable ◆ Settings

4. Basic Operations

4.1 POWER

Press **POWER** key can enter the Standby mode (Standby mode screen turned off the red LED).

In Standby mode, press **POWER** key again to call back the unit and go to the previous channel.

User can also disconnect the device's main power to end the Standby mode.

In the Multimedia full-screen playback, press the **FILE** key to file pause or play.

4.2 Recall

Press **RECALL** key will directly switch to the previous channel you can watch like below.

4.3 Audio

In full screen, press **AUDIO** key to switch Left/Right/Stereo Mode (Middle of the screen showing the switching status).

4.4 Information

In full screen, press **INFO** key to open information screen, the window shows the parameters of current channel.

4.5 Channel List

In full screen, press **OK** key to enter **Channel List**.

Start Time: You can set the start time (Year-month-day hours).

Duration Time: You can set the time how many minutes.

Repeat: You can set the repeat mode for the Once/ Daily/Weekly.

Mode: You can set the mode for the View or PVR (PVR functionality requires an external disk).

Press **Green** key to go through the letter Quick Find

Press **UP** or **DOWN** key to move highlight and press **OK** key to play the channel.

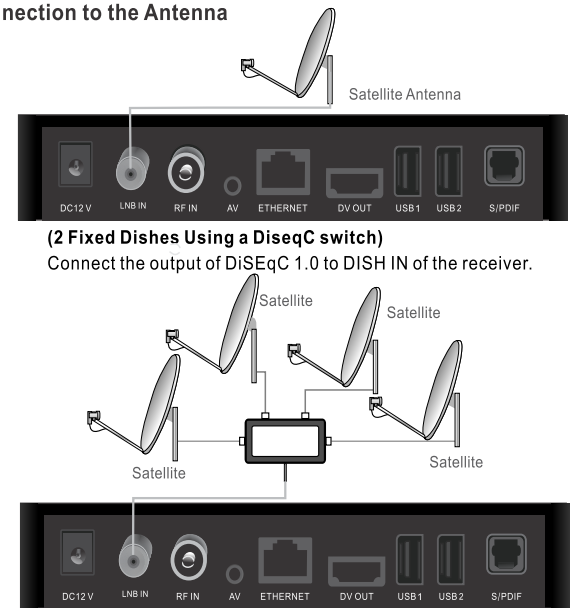
Press **PAGE UP/ DOWN** key to turn the page.

Press **BACK** key to exit the channel list.

Press **SAT** key to display a single satellite or all satellite programs.

Press **Red** key in Event Add menu to set a Book. And press **YES** save.

2.3 Connection to the Antenna



4.6 Record

In full screen, press **RECORD** key to instantaneously start a record on the current channel.

When prompted menu. Input record length (default minutes), and select **YES** start.

Press **STOP** or **BACK** key to stop recording, then a confirmation window appears. Press **YES** to stop recording, Press **BACK** key to continue recording.

DVB-S2

5. SEARCH

5.1 Satellite search

Press the **OK** or **DVB-S** button to enter Satellite menu.

Press the **YES** button or **MENU** button to enter main menu.

Press **UP** or **DOWN** button to highlight program, then press button to enter the Program menu.

Press **UP** or **DOWN** cursor button to highlight the desired item, and then press **OK** button to enter the sub-menu.

Press **BACK** button to return to main menu.

SEARCH main menu

Press **OK** button to enter the selected item.

5.1.1 Dish setup

Select Satellite

When you press **OK** button, you will see the screen like below:

Press **OK** button to select one or more Satellites and then press "Green" button. It will show a dialog asking scan mode, Encrypted, Service type. After you set up, Press **YES** button to start scanning.

Press the "Red" button to Add a new satellite.

Press the **YELLOW** button to Edit the name and longitude of the select Satellite.

Press the **BLUE** button to Delete one or more Satellites that you have selected.

LNB Type

In this item, Press **OK** button can switch LNB Type, and select "User" set LNB Type.

LNB Power

In this item, Press **OK** button can switch "13V", "18V", "OFF" and "13V/18V".

22K

In this item, Press **OK** button can switch "22K ON/OFF". When this item is switched to "ON", receiver will receive TV and radio input signal from 22K port. If the item is switched to "OFF", the receiver will receive all signals from OK port.

! Notice

When you choose LNB type "universal", you cannot modify 22K.

ToneBurst

In this item, Press **OK** button can switch among ToneBurst "A", "B", "None".

DiSEqC1.0/DiSEqC1.1

In this item, Press **OK** button can switch "LNB1, LNB2, LNB3 and LNB4": 4 ports DiSEqC 1.0. In this item, Press **OK** button can switch "LNB1" "LNB2"... "LNB16": 16 ports DiSEqC1.1

Motor Mode

In this item, Press **OK** button can switch "None/ DiSEqC1.2/DiSEqC1.3 (USALS) functions.

When you choose DiSEqC1.2, and Press **I** key to enter the "Sat/TP" menu.

You can press **PgUp** key to enter the Set position menu, you will see the screen like below:

When you choose DiSEqC1.3(USALS), and press **PgDn** key to enter the Set Location menu, you will see the screen like below:

TP Edit

Press **T** key to enter the "Sat/TP" menu, there will display the screen like below:

Press **K** button to select one or more TP and then press **Green** button. It will show a dialog asking scan mode, Encrypted, Service type. After you set up, Press **YES** button to start scanning.

Press the **Dell** button to Delete All TP parameter.

Press the **Blue** button to Delete select TP parameter.

Press the **Red** button to Add a new TP parameter.

Press the **Yellow** button to Edit TP parameter.

Press the **PgUp** button to set Position TP parameter.

TP Scan

Press **Green** button to scan current TP programs.

Single Scan

Press **Green** button, it will display a dialog asking the scan mode.

Press **OK** button Scan mode is Default or Blind scan (Default scan: that is searching the existed TP, Blind scan: there is no need for existing TP info).

Press **OK** button Encrypted type is All or FTA channels (means you want to scan all channels or only scan free channels).

Press **OK** button Service type is All, TV, Radio (means you want to scan all channels or only scan TV/Radio channels).

Press **YES** key into the bind scanning immediately.

5.1.2 DB Management

When you press **OK** button, you will see the screen like below:

You can back up the entire current list of programs, after a software upgrade or reset can directly import a list of programs.

5.1.3 Unicable Switch

In Unicable switch item, you can press **OK** button to switch ON/OFF functions.

DVB-T2

5.2 Terrestrial SEARCH

Press the **OK** or **DVB-T** button to enter Terrestrial item.

Press the **YES** button or **MENU** button to enter main menu.

Press **UP** or **DOWN** button to highlight "Program", then press **LEFT** button to enter the Program menu.

Press **UP** or **DOWN** cursor button to highlight the desired item, and then press **OK** button to enter the sub-menu.

Press **BACK** button to return to main menu.

SEARCH main menu

Press **OK** button to enter the selected item.

Auto Scan

Select the **Auto Search**, Press **OK** button to start Auto Search, Press **BACK** button to cancel.

I Notice:

Auto Scan is the frequency range of the selected Area.

Manual Scan

There are two modes, You can scan channel "by channel" or "by frequency". When scan band is UHF and region is "France", the range of Ch No. is from 21 to 69. When scan band is VHF and region is "France", the range of Ch No. is from 6 to 12 (it's according to region).

Area

You can select the Bandwidth according different country.

LCN

It will not provide the LCN function by setting the "LCN" to ON/OFF.

IF LCN [logical channel Number] select function is activated, you can't change the original number of TV Channels by scanning.

DB Management

When you press **OK** button, you will see the screen like below:

You can back up the entire current list of programs after a software upgrade or reset can directly import a list of programs.

Antenna Power Output

When "Antenna Power" is selected "on", the STB

will provide 5V power to antenna

DVB-C

5.3 Cable SEARCH

Press the **OK** or **DVB-C** button to enter Cable item.

Press the **YES** button or **MENU** button to enter main menu.

Press **UP** or **DOWN** button to highlight "Program", then press **LEFT** button to enter the Program menu.

Press **UP** or **DOWN** cursor button to highlight the desired item, and then press **OK** button to enter the sub-menu.

Press **BACK** button to return to main menu.

SEARCH main menu

Press **OK** button to enter the selected item.

Auto Scan

Select the "Auto Search", Press **OK** button to start Auto Search, Press **BACK** button to cancel.

Manual Scan

There are two modes, You can scan channel "by channel" or "by frequency". When scan band is UHF and region is "France", the range of Ch No. is from 21 to 69. When scan band is VHF and region is "France", the range of Ch No. is from 6 to 12 (it's according to region)

DB Management

You must press **OK** button.

You can back up the entire current list of programs, after a software upgrade or reset can directly import a list of programs.

6. Sprogram

Press **LEFT** button to enter main menu.

Press **OK** button to enter the sub-menu.

Press **BACK** button to return to main menu.

VHF - band I		
1	-	-
2	58..66	62
VHF - band II		
3	76..84	80
4	84..92	88
5	92..100	96
Cable special band - I		
S1	110..118	114
S2	118..126	122
S3	126..134	130
S4	134..142	138
S5	142..150	146
S6	150..158	154
S7	158..166	162
VHF - band III		
6	174..182	178
7	182..190	186
8	190..198	194
9	198..206	202
10	206..214	210
11	214..222	218
12	222..230	226
Cable special band II		
S11	230..238	234
S12	238..246	242
S13	246..254	250
S14	254..262	258
S15	262..270	266
S16	270..278	274
S17	278..286	282
S18	286..294	290
S19	294..302	298
UHF-Hyperband special band III		
S20	302..310	306
S21	310..318	314
S22	318..326	322
S23	326..334	330
S24	334..342	338
S25	342..350	346
S26	350..358	354
S27	358..366	362
S28	366..374	370
S29	374..382	378
S30	382..390	386
S31	390..398	394
S32	398..406	402
S33	406..414	410
S34	414..422	418
S35	422..430	426
S36	430..438	434
S37	438..446	442
S38	446..454	450
S39	454..462	458
S40	462..470	466

IV UHF band		
21	470..478	474
22	478..486	482
23	486..494	490
24	494..502	498
25	502..510	506
26	510..518	514
27	518..526	522
28	526..534	530
29	534..542	538
30	542..550	546
31	550..558	554
32	558..566	562
33	566..574	570
34	574..582	578
V UHF band		
35	582..590	586
36	590..598	594
37	598..606	602
38	606..614	610
39	614..622	618
40	622..630	626
41	630..638	634
42	638..646	642
43	646..654	650
44	654..662	658
45	662..670	666
46	670..678	674
47	678..686	682
48	686..694	690
49	694..702	698
50	702..710	706
51	710..718	714
52	718..726	722
53	726..734	730
54	734..742	738
55	742..750	746
56	750..758	754
57	758..766	762
58	766..774	770
59	774..782	778
60	782..790	786
Additional UHF band		
61	790..798	794
62	798..806	802
63	806..814	810
64	814..822	818
65	822..830	826
66	830..838	834
67	838..846	842
68	846..854	850
69	854..862	858

6.1 Program Edit

You can move highlight by pressing **UP / DOWN** key and **OK** key to select the programs which you want to edit.

You can press **PAGE UP/DOWN** key to implement the Page Up/ Page Down function.

You can press **RIGHT /LEFT** key to switch item TV, Radio, Favorite.

Press **Back** key to exit the current menu.

Favorite

In full screen, press **FAV** key, it will display the "Favorite list" window on the left of the screen.

In the "Favorite list" window you can move highlight by pressing **UP/DOWN** key to select favorite channels.

In the "Favorite list" window you can press **RIGHT** or **LEFT** key to select favorite groups, Pressing **PAGE Up/Down** keys can implement the function.

Press **BACK** key to exit the current window.

Delete

Select the channels that you want, and press **RED** key to delete the channel by pressing **YES** button.

Move

Select the channels that you want, and press **GREEN** key to move the channel. Move the cursor **UP/DOWN** key to the desired position, press the **OK** button to confirm.

Rename

Select the channels that you want, and press **YELLOW** key to edit the channel name.

Lock

Select the channels that you want, and press **BLUE** key to lock the channel, Back program with a small lock symbol. The default password is "0000".

6.2 EPG

The STB has an Electronic Program Guide (EPG) to help you navigate channels through all the possible viewing options. The EPG supplies information such as channel listings and starting/ ending timer for all available channels.

Press **EPG** key to display EPG screen.

Press **OK** key to select the channels by different group, such as by "Favorite/Satellite".

Press **LEFT** key to select different display modes among Now EPG, Next EPG, more and Schedule.

Press **BACK** button to return main menu.

6.3 PVR Configure

In the Disk- item, you can press **OK** button to select use disk.

In the "Timeshift size" item, you can press **OK** button to set the size 10Min, 30Min or 60Min (The length of time you need disk space to support).

6.4 PVR Manager

You can move highlight by pressing **UP/DOWN** key, and Press the **OK** button to select the desired operation.

You can the **RED** button to preview files.

You can the **YELLOW** button to Play files. You can press the **BLUE** button to Delete files.

Press **BACK** button to exit menu.

6.5 Timeshift

In the timeshift item, you can control the broadcast temporarily, and press **BACK** key to exit timeshift mode.

7. System

Press **LEFT** button to enter main menu. Press **OK** button to enter the sub-menu. Press **BACK** button to return to main menu.

7.1 Recall List

In the "Recall List" item, You can recall to the set 1, 3 or 5 programs (you can quickly and controlled by remote control).

7.2 Subtitle Switch

Press the **OK** button to switch ON/OFF.

Press **SUBT** key in full screen, you can switch subtitle on or off, If the channel has no subtitle information it will show "No subtitle Data" on the screen.

7.3 Factory data reset

Press the **OK** button to restore factory settings, the default password is 0000.

! Notice

This action will delete all of the information, the software returns to the original state.

7.4 Set password

In the et password item, you can reset all passwords (the default password is 0000).

7.5 Parental rating age

Press **OK** button to set the parental rating age is "All or 4...18" (the default password is 0000').

7.6 TTX Region

In the "TTX Region item, you can switch the default teletext region.

8. Option

Press **LEFT** button to enter main menu. Press **OK** button to enter the submenu. Press **BACK** button to return to main menu.

8.1 Picture Size

When you enter Picture size menu, there will display the screen.

8.2 Subtitle Language

In the ubtitle language item, you can switch the default language.

8.3 Audio Language

In the udio language item, you can switch the default language.

8.4 Blackout Policy

In the lackout policy item, you can switch the ON/OFF

8.5 Information Show Time

When you enter nformation show time' menu, you can switch the time is 2s,3s.,10s.

9. Apps

Press the "Apps" item, then press **OK** key to enter. You can find all the apps setting in the device.

9.1 Browser

Press "Browser" item, the homepage is Google page.

9.2 Appinstaller

Press "Appinstaller", press **OK** to enter. You can install apps by this app installer function. Please copy your desired software as app format from the computer to the USB storage device first, and then choose the desired device in order to scan the apps. Press **OK** to install your desired software.

When the installation finished, the software item will be shown in My Apps.

9.3 CS-Protocol

Press "CS-Protocol", press **OK** to enter. You may need to enter the account number.

9.4Update&Backup

Press "Update&Backup" item, press **OK** to enter. Click "Select" if you have upgrade package zip file in USB storage device or SD card, choose the zip file then click "Update" to start the update process. When the update process is finished, system will restart automatically.

10. Local

Press the "Local" item, then press **OK** key to enter Here you can cut, copy, paste, move the files and folders between the local disk and external storage card.

11. Settings

Press the "Settings" item, then press **OK** key to enter.

11.1 Wi-Fi Network

Check "Wi-Fi", System will start scanning available wireless points around you automatically.

Choose an access point and enter the password.

After authenticating, IP address will be given to the box and "connected" is shown, wireless connection is available now.

Wi-Fi connection and Ethernet connection are mutually excluded in this setting app. Only one could be activated at the same time.

11.2 Ethernet Network

Click "Ethernet", System will start DHCP process automatically.

When the IP address appears, the network connection is available.

11.3 Display

Press "Display" to choose display setting. Here you can toggle HDMI auto-detection, hide or show status bar at the bottom of the screen, adjust display area, set screen saver timeout. Display Position: use "UP or DOWN" button to adjust the display area size.

11.4 Advanced

Click "Advanced" to choose advanced settings. Here you can setup Mira cast, Remote Control, Google TV Remote, Location, Digital audio autodetection and Digital Audio Output.

11.5 Other

Click "Other" to see more TV Box information. You can do system update and adjust more settings here.

12. Upgrade Steps

Please unzip the upgrade package to the SD card; there are three files in the root of the SD card as follow.

aml_sdc_burn.ini (Configuration settings file)

aml_upgrade_package.img (the upgrade package zip file)

Recovery (optional)

Insert HDMI cable or AV cable and SD card with the box.

(Connect the other side of the HDMI cable to the TV HDMI port.)

Often press the "RECOVERY" button next to the TF card.

Please insert the adapter to the STB energized (Keep pressing the **RECOVERY** button).

The upgrade process will start automatically.

Tips: You can check the build number in settings to confirm to confirm you have updated the box successfully.

13. Troubles hooting

If you suspect there is a fault with your receiver, please check the following trouble shooting guide before calling an authorized service agent.

Warning! Under no circumstances attempt to repair the receiver yourself. Tampering with the receiver may result in fatal electric shock and will invalidate your warranty.

Symptom	Possible cause
Settings you made in the menu have not change	The receiver lost power before being able to enter into standby mode. Some of the settings saved by user can be deleted partly or fully
No signal	The level of signal is too weak LNB is out of order The cable from the LNB or Terrestrial antenna is incorrectly Connected (short circuit or open circuit) The position of dish is aligned incorrectly
Receiver is on, but no picture or sound except the following messages (NO TV program)	Channel is not available Channel is scrambled
Receiver not responding to remote control unit	RCU batteries are dead or inserted incorrectly The RCU is pointing toward wrong direction
Poor picture Quality	The level of Signal strength is too low
No sound	The cable is connected incorrectly The Volume level is too low Mute function is active
No display on the VFD Display Panel	The power cord is not plugged in correctly.
NOpicture on the screen	Receiver is in Standby mode. RCA Jack or cable is not connected firmly to the video output port of your television. Incorrect channel or video output is selected on your television Brightness level of your TV set is incorrectly defined.
The contents of the USB flash drive cannot be read	The USB flash drive format is not compatible with the box If one of the USB can not be read, please turn off the BOX for 30 seconds and restart the TV BOX
The tv screen is blank and the player led is blinking	Turn off your TV BOX, wait 30 seconds, turn it on again. If under HDTV status, check if HDTV connection is correct or change another HDTV cable, set the output resolution of this TV BOX into 720P.